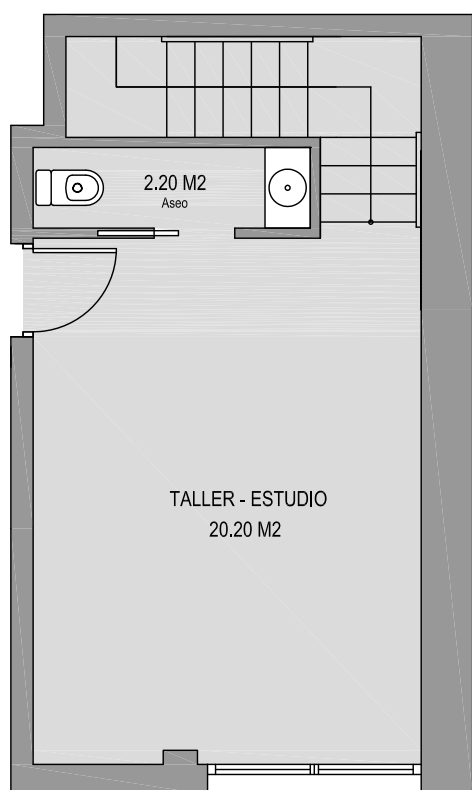
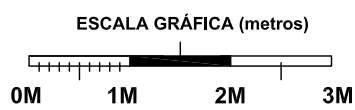


PLANTA ENTRESUELO

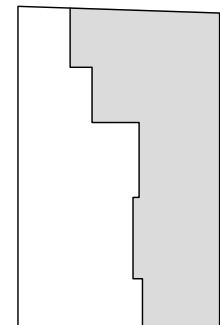


PLANTA SEMISOTANO



EDIFICIO COSTA 105

GIJON



ENTRESUELO LETRA B 2 DORMITORIOS

SUPERFICIES APROXIMADAS m²

Superficie útil 91,18 m²

Superficie construida 105,69 m²

PROMUEVE



COMERCIALIZA

